

DM-MEDIUM SOLID DOOR ENCLOSURE



Materials : Body, Front Door,
Gland Plate Mild Steel
Mounting Plate Galvanized Steel

Surface Finishing : Iron-phosphate + electrostatic
powder coating RAL 7035

IP Rate : IEC EN 60529
Single Door IP66, Double Door IP54

NEMA Rate : Nema 4

Standards : IEC 62208 (Enclosure Standards)

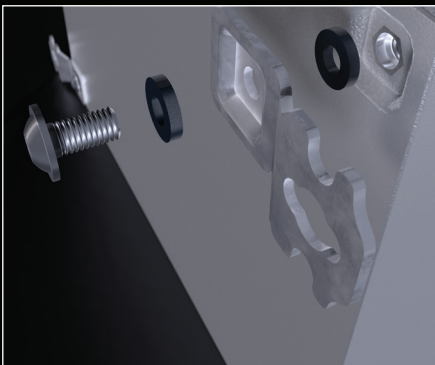
Corrosion Rate : C3-M based on TS EN ISO 12944-2

Warranty : KYT-72

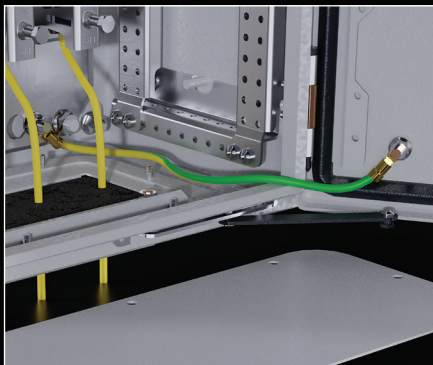
Supply Includes : Body, Hinged Door, Gland Plate,
Mounting Plate, Assembly Parts

ACCESSORIES:

Wall Bracket p.: 55



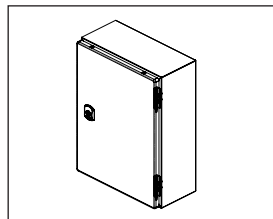
Earthing Cable p.: 71



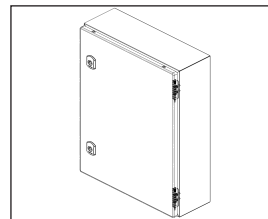
Other Accessories p.: 50

DM-MEDIUM SOLID DOOR ENCLOSURE

PRODUCT CODE	ENCLOSURE				MOUNTING PLATE		STEEL THICKNESSES			DOOR		
	W*	H*	D*	WEIGHT	W	H	BODY	DOOR	MOUNTING PLATE	LOCK	HINGE	VERSION
	mm	mm	mm	kg	mm	mm	mm	mm	mm	pcs.	pcs.	
DM 252.315	250	300	150	5,09	200	275	1,2	1,2	2	1	2	1
DM 252.321	250	300	210	6,58	200	275	1,2	1,2	2	1	2	1
DM 252.351	250	350	150	5,66	200	325	1,2	1,2	2	1	2	1
DM 253.315	300	300	150	5,75	250	275	1,2	1,2	2	1	2	1
DM 253.321	300	300	210	7,29	250	275	1,2	1,2	2	1	2	1
DM 253.415	300	400	150	7,06	250	375	1,2	1,2	2	1	2	1
DM 253.421	300	400	210	8,71	250	375	1,2	1,2	2	1	2	1
DM 253.521	300	500	210	10,13	250	475	1,2	1,2	2	2	2	2
DM 254.315	400	300	150	7,07	350	275	1,2	1,2	2	1	2	1
DM 254.421	400	400	210	10,49	350	375	1,2	1,2	2	1	2	1
DM 254.515	400	500	150	10,37	350	475	1,2	1,2	2	2	2	2
DM 254.521	400	500	210	12,25	350	475	1,2	1,2	2	2	2	2
DM 254.526	400	500	260	14,02	350	475	1,2	1,2	2	2	2	2
DM 254.530	400	500	300	15,57	350	475	1,2	1,2	2	2	2	2
DM 254.615	400	600	150	12,02	350	575	1,2	1,2	2	2	2	2
DM 254.621	400	600	210	14,01	350	575	1,2	1,2	2	2	2	2
DM 254.626	400	600	260	15,88	350	575	1,2	1,2	2	2	2	2
DM 254.630	400	600	300	17,51	350	575	1,2	1,2	2	2	2	2
DM 254.830	400	800	300	27,06	350	775	1,2	1,5	2	2	2	2



Version 1



Version 2

Catalogue



Assembly Instructions

DM-MEDIUM SOLID DOOR ENCLOSURE



Materials : Body, Front Door,
Gland Plate Mild Steel
Mounting Plate Galvanized Steel

Surface Finishing : Iron-phosphate + electrostatic
powder coating RAL 7035

IP Rate : IEC EN 60529
Single Door IP66, Double Door IP54

NEMA Rate : Nema 4

Standards : IEC 62208 (Enclosure Standards)

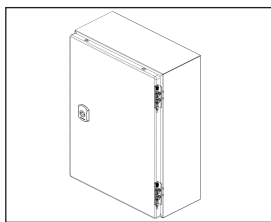
Corrosion Rate : C3-M based on TS EN ISO 12944-2

Warranty : KYT-72

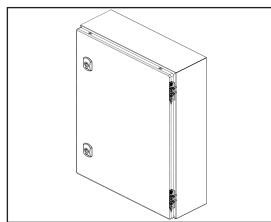
Supply Includes : Body, Hinged Door, Gland Plate,
Mounting Plate, Assembly Parts

DM-MEDIUM SOLID DOOR ENCLOSURE

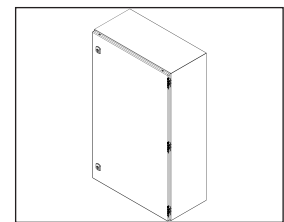
PRODUCT CODE	ENCLOSURE				MOUNTING PLATE		STEEL THICKNESSES			DOOR		
	W*	H*	D*	WEIGHT	W	H	BODY	DOOR	MOUNTING PLATE	LOCK	HINGE	VERSION
	mm	mm	mm	kg	mm	mm	mm	mm	mm	pcs.	pcs.	
DM 255.421	500	400	210	12,26	450	375	1,2	1,2	2	2	2	1
DM 255.521	500	500	210	14,37	450	475	1,2	1,2	2	2	2	2
DM 255.530	500	500	300	18,50	450	475	1,2	1,2	2	2	2	2
DM 255.615	500	600	150	15,12	450	575	1,2	1,2	2	2	2	2
DM 255.621	500	600	210	17,22	450	575	1,2	1,5	2	2	2	2
DM 255.626	500	600	260	19,18	450	575	1,2	1,5	2	2	2	2
DM 255.630	500	600	300	20,89	450	575	1,2	1,5	2	2	2	2
DM 255.721	500	700	210	19,45	450	675	1,2	1,5	2	2	2	2
DM 255.726	500	700	260	21,50	450	675	1,2	1,5	2	2	2	2
DM 256.421	600	400	210	14,84	550	375	1,2	1,5	2	2	2	1
DM 256.621	600	600	210	20,07	550	575	1,5	2	2	2	2	2
DM 256.630	600	600	300	23,90	550	575	1,5	2	2	2	2	2
DM 256.640	600	600	400	28,88	550	575	1,5	2	2	2	3	2
DM 256.821	600	800	210	30,23	550	775	1,5	2	2	2	3	2
DM 256.826	600	800	260	33,03	550	775	1,5	2	2	1	3	2
DM 256.830	600	800	300	35,43	550	775	1,5	2	2	2	3	2
DM 256.840	600	800	400	42,11	550	775	1,5	2	2	1	3	2
DM 256.126	600	1000	260	39,47	550	975	1,5	2	2	2	3	3
DM 256.130	600	1000	300	42,06	550	975	1,5	2	2	1	3	3
DM 256.123	600	1200	300	48,69	550	1175	1,5	2	2	1	3	5
DM 258.630	800	600	300	29,50	750	575	1,5	2	2	2	2	2
DM 258.632	800	600	300	29,50	750	575	1,5	2	2	2	4	4
DM 258.821	800	800	210	38,18	750	775	1,5	2	2	2	2	2
DM 258.830	800	800	300	43,80	750	775	1,5	2	2	2	2	2
DM 258.126	800	1000	260	49,37	750	975	1,5	2	2	2	3	3
DM 258.130	800	1000	300	53,62	750	975	1,5	2	2	2	3	3
DM 258.123	800	1200	300	62,30	750	1175	1,5	2	2	1	3	5



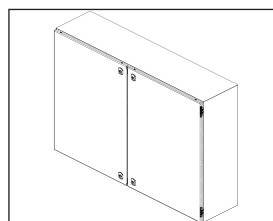
Version 1



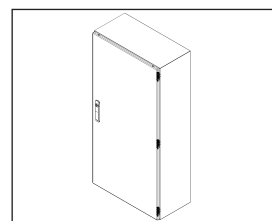
Version 2



Version 3



Version 4



Version 5

Catalogue



Assembly Instructions