



 41/82	P. 04
 CT, RA	P. 14
 OBP, OBC, OAP, OAC, OR	P. 15
 ACS, ACT, ACL	P. 16
 GV, GVV, BCA, CSJ	P. 18
 DIN976, SBC, SBL, SBZ	P. 20
 DIN933, DIN912, DIN934, DIN125, DIN6923, DIN9021, ISO7380	P. 21
 SCM, CCM, CM	P. 22
 TT, TTL	P. 23
 FPS	P. 24

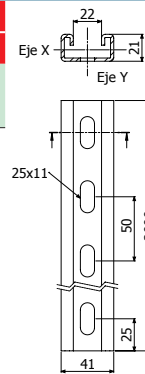


41X21



L = 3 m (10 ft)

	e mm	A		Wx		Wy		GS		GC	
		cm ²	in ²	cm ³	in ³	cm ³	in ³	REF.	kg/m	REF.	kg/m
41X21X1,5	1,5	1,44	0,22	0,79	0,04	1,86	0,11	2/6366	1,26	-	1,35
41X21X2,5	2,5	2,14	0,33	1,08	0,06	2,73	0,16	2/0235	1,71	2/0236	1,80

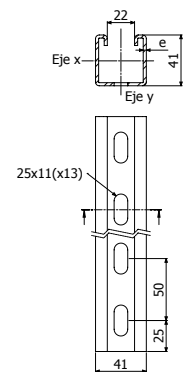


41X41



L = 3 m (10 ft)

	e mm	A		Wx		Wy		GS		GC	
		cm ²	in ²	cm ³	in ³	cm ³	in ³	REF.	kg/m	REF.	kg/m
41X41X1,5	1,5	1,95	0,30	2,09	0,12	2,92	0,17	2/6365	1,67	-	1,79
41X41X2,5	2,5	3,13	0,48	3,16	0,19	4,54	0,27	2/0233	2,53	2/0234	2,66
41X41X2,5 D13	2,5	3,13	0,48	3,16	0,19	4,54	0,27	2/7388	2,53	-	4,54

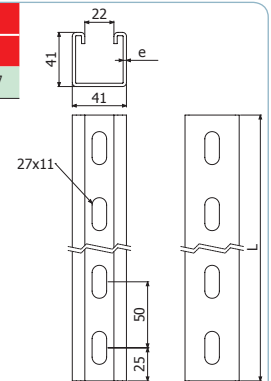


41X41X2-3S



L = 3 m (10 ft)

	e mm	A		Wx		Wy		GS		GC	
		cm ²	in ²	cm ³	in ³	cm ³	in ³	REF.	kg/m	REF.	kg/m
41X41X2-3S	2	2,20	0,34	2,27	0,14	3,08	0,19	2/17313	2,02	2/17312	2,217

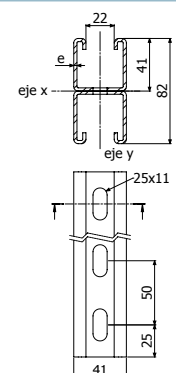


41X82



L = 3 m (10 ft)

	e mm	A		Wx		Wy		GS		GC	
		cm ²	in ²	cm ³	in ³	cm ³	in ³	REF.	kg/m	REF.	kg/m
41X82X2,5	2,5	6,37	0,98	9,49	0,57	9,11	0,55	-	5,05	2/5573	5,31

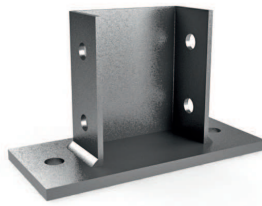




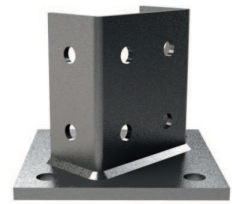
A



K41



K82



K82ME



SB41



SBL41



KA41



4182H

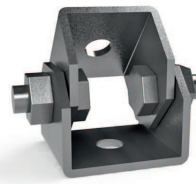
A



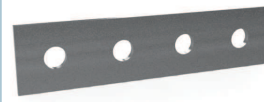
4182CR



4182TE



4182CV



4182A



4182B



4182C



4182CD



4182D



4182E



4182F



4182G



4182I



SB41

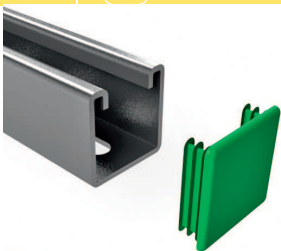


SBL41



4182H

A



TF41



TM41



TAD



TEP

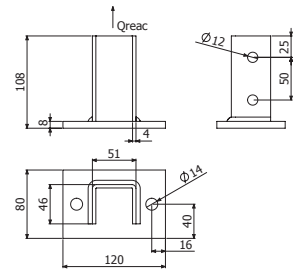


K41

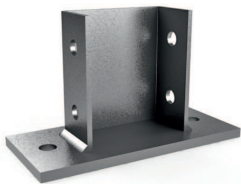


K41	Q _{reac} kg	Pap N-m	GC	
			REF.	kg/ud
K41	700	40	2/5622	0,83

2 x DIN933 M10X30 (0/0320) + 2 x TM41 M10 (0/1071)

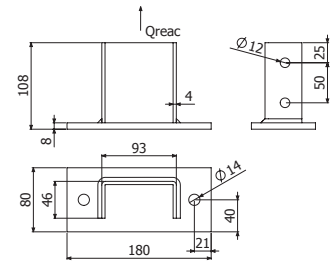


K82



K82	Q _{reac} kg	Pap N-m	GC	
			REF.	kg/ud
K82	1100	40	2/5574	1,44

4 x DIN933 M10X30 (0/0320) + 4 x TM41 M10 (0/1071)



K82ME

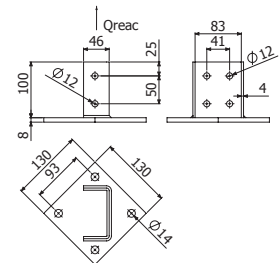


K82ME	Q _{reac} kg	Pap N-m	GC	
			REF.	kg/ud
K82ME	1100	40	2/7020	1,57

2x 4 x DIN933 M10X30 (0/0320) + 4 x TM41 M10 (0/1071)
4/50 x B3 (2/8827 - GC)

1x 2 x DIN933 M10X30 (0/0320) + 2 x TM41 M10 (0/1071)
+ 2 x DIN933 M8x20 (0/0318) + 2 x DIN6923 M8 (0/0348)

2x 4 x DIN933 M8X20 (0/0318) + 4 x DIN6923 M8 (0/0348)



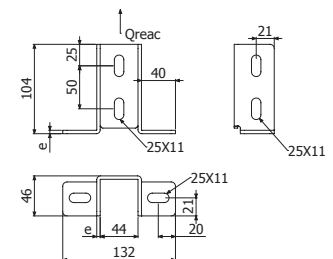
SBL41



SBL41	Q _{reac} kg	Pap N-m	e mm	GS		e mm	GC	
				REF.	kg/m		REF.	kg/ud
SBL41	600	40	4	2/7058	0,40	4	2/6472	0,44

2 x DIN933 M10X30 (0/0320) + 2 x TM41 M10 (0/1071)

2/50 x B3 (2/8827)





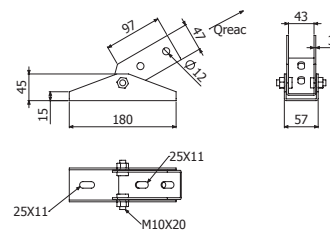
KA41



KA41	Q _{reac}	Pap	GC	
	kg	N·m	REF.	kg/ud
KA41	1000	40	2/6475	0,82

2 x DIN933 M10X30 (0/0320) + 2 x TM41 M10 (0/1071)

2/50 x B3 (2/8827)



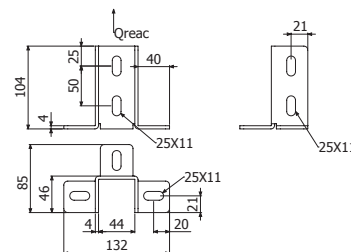
SB41



SB41	Q _{reac}	Pap	GC	
	kg	N·m	REF.	kg/ud
SB41	700	40	2/6471	0,51

2 x DIN933 M10X30 (0/0320) + 2 x TM41 M10 (0/1071)

2/50 x B3 (2/8827)



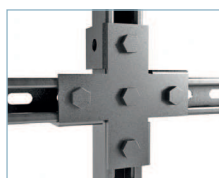
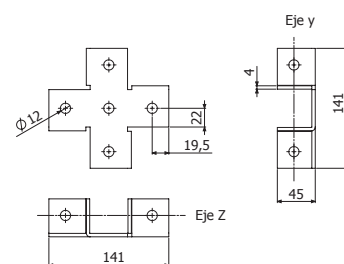
4182CR



4182CR	Reducc z	Reducc y	Pap	GC	
			N·m	REF.	kg/ud
4182CR	0%	0%	40	2/6473	0,56

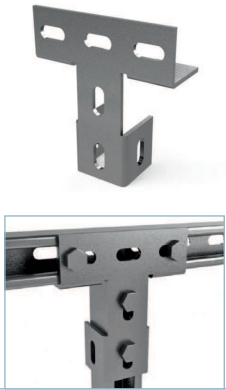
5 x DIN933 M10X30 (0/0320) + 5 x TM41 M10 (0/1071)

5/50 x B3 (2/8827)





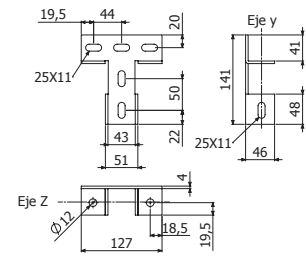
4182TE



4182TE	Reducc	Reducc	Pap	GC	
	z	y	N-m	REF.	kg/ud
	0%	0%	40	2/6474	0,51

4 x DIN933 M10X30 (0/0320) + 4 x TM41 M10 (0/1071)

4/50 x B3 (2/8827)

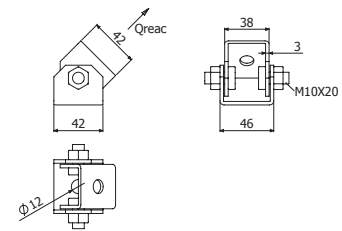


4182CV

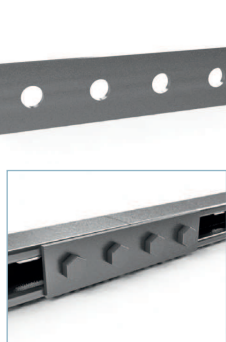


4182CV	Qreac	Pap	GC	
	kg	N-m	REF.	kg/ud
	500	20	2/6477	0,51

M8 & M10



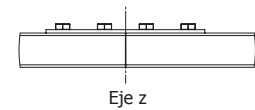
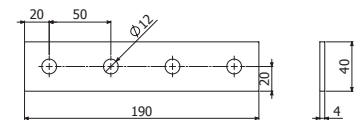
4182A



4182A	Reducc	Pap	GC	
	z	N-m	REF.	kg/ud
	20%	40	2/6311	0,23

4 x DIN933 M10X30 (0/0320) + 4 x TM41 M10 (0/107)

4/50 x B3 (2/8827)



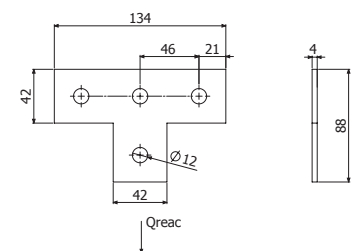
4182B



4182B	Qreacc	Pap	GC	
	kg	N-m	REF.	kg/ud
	350	40	2/6312	0,23

4 x DIN933 M10X30 (0/0320) + 4 x TM41 M10 (0/1071)

4/50 x B3 (2/8827)





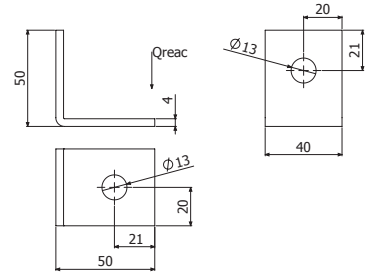
4182C



4182C	Qreacc	Pap	GC	
	kg	N-m	REF.	kg/ud
	350	40	2/6313	0,11

2 x DIN933 M10X30 (0/0320) + 2 x TM41 M10 (0/1071)

2/50 x B3 (2/8827)



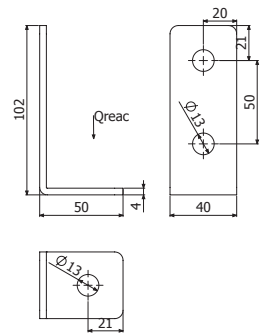
4182CD



4182CD	Qreacc	GC	
	kg	REF.	kg/ud
	700	2/7127	0,17

3 x DIN933 M10X30 (0/0320) + 3 x TM41 M10 (0/1071)

3/50 x B3 (2/8827)



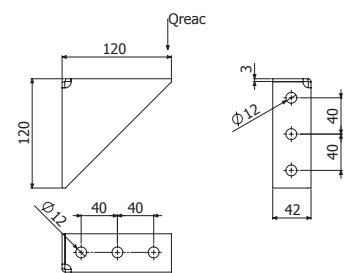
4182D



4182D	Qreacc	Pap	GC	
	kg	N-m	REF.	kg/ud
	1.050	40	2/6314	0,36

4 x DIN933 M10X30 (0/0320) + 4 x TM41 M10 (0/1071)

4/50 x B3 (2/8827)





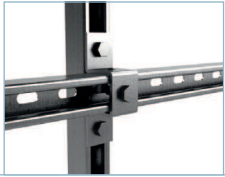
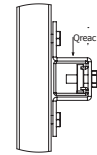
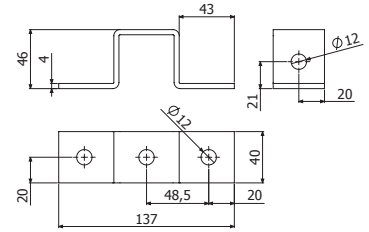
4182E



4182E	Qreacc	Pap	GC	
	kg	N-m	REF.	kg/ud
	700	40	2/6315	0,25

3 x DIN933 M10X30 (0/0320) + 3 x TM41 M10 (0/1071)

2/50 x B3 (2/8827)



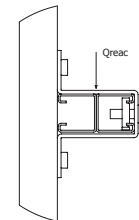
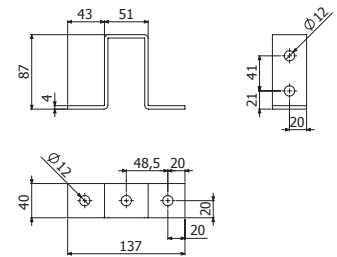
4182F



4182F	Qreacc	Pap	GC	
	kg	N-m	REF.	kg/ud
	700	40	2/6316	0,35

3/4 x DIN933 M10X30 (0/0320) + 3/4 x TM41 M10 (0/1071)

3/4 x B3 (2/8827)



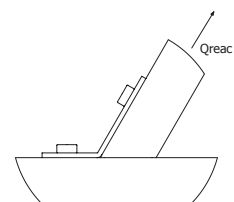
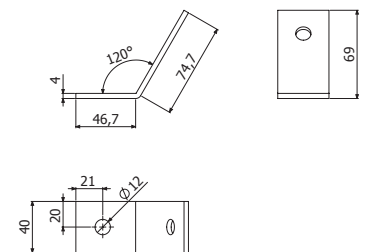
4182G



4182G	Qreacc	Pap	GC	
	kg	N-m	REF.	kg/ud
	250	40	2/6317	0,11

2 x DIN933 M10X30 (0/0320) + 2 x TM41 M10 (0/1071)

2/100 x B3 (2/8827)





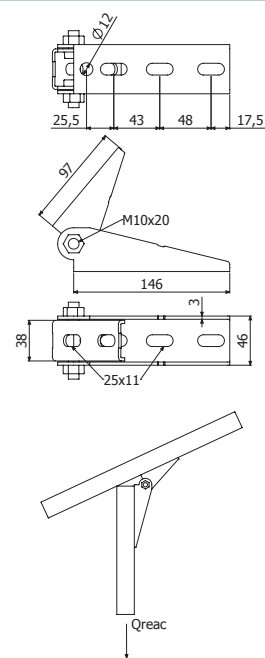
4182H



4182H	Qreacc	Pap	GC	
	kg	N-m	REF.	kg/ud
	800	40	2/6948	0,72

4 x DIN933 M10X30 (0/0320) + 4 x TM41 M10 (0/1071)

4/50 x B3 (2/8827)



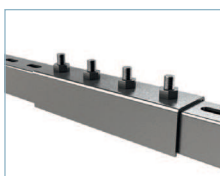
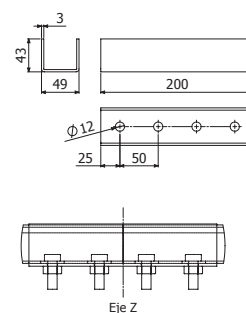
4182I



4182I	Reducc	GC	
	Z	REF.	kg/ud
	0%	2/7011	0,62

4 x DIN933 M10X30 (0/0320) + 4 x TM41 M10 (0/1071)

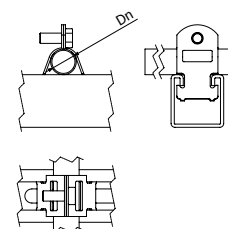
4/50 x B3 (2/8827)



BFT



	Dn mm	e mm	GC	
			REF.	kg/ud
BFT 1/2"	21,3	1,5	2/14642	0,06
BFT 3/4"	25,4-26,9	1,5	2/14643	0,07
BFT 1"	32,8-33,4	1,5	2/14644	0,08
BFT 1 1/4"	41,3-42,4	2	2/14645	0,09
BFT 1 1/2"	47,6-48,3	2	2/14646	0,10
BFT 2"	60,3	2,5	2/14647	0,12
BFT 2 1/2"	69,9-73,0	2,5	2/14648	0,14
BFT 3"	84,0-88,9	2,5	2/14649	0,16
BFT 4"	111,1-115,3	2,5	2/14650	0,20

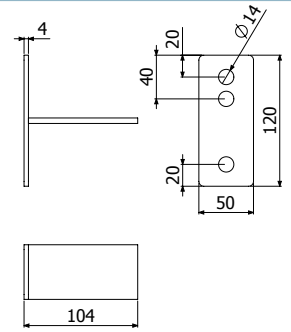




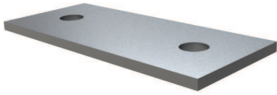
TSO



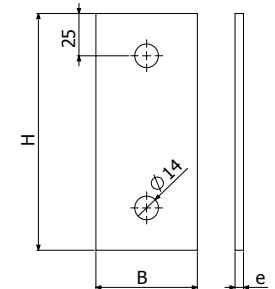
TSO	e mm	GC	
		REF.	kg/ud
TSO	4	2/6332	0,19



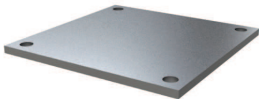
PSOS



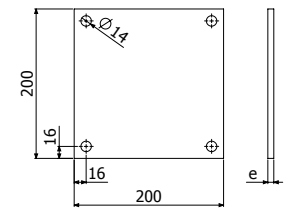
PSOS 60X140X5 PSOS 80X180X8	B		H		e mm	GC	
	mm	inch	mm	inch		REF.	kg/ud
PSOS 60X140X5	60	2 1/3"	140	5 1/2"	5	2/7082	0,34
PSOS 80X180X8	80	3 1/7"	180	7"	8	2/1131	0,92



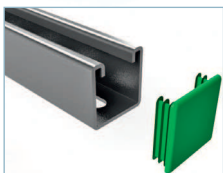
PSOM



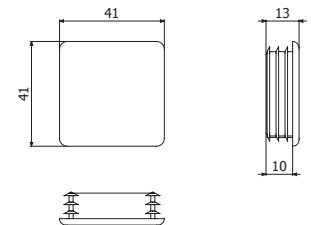
PSOM 200X200X5 PSOM 200X200X10	e mm	GC	
		REF.	kg/ud
PSOM 200X200X5	5	2/1155	1,60
PSOM 200X200X10	10	2/0245	3,20



TF41



TF41	PVC	
	REF.	kg/ud
TF41	2/5627	0,01

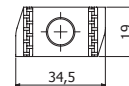
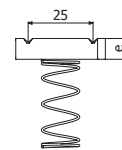




TM41



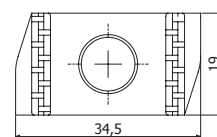
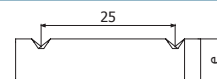
	e mm	Qtrac kg	Qcort kg	Pap N-m	EZ		GC		i316	
					REF.	kg/ud	REF.	kg/ud	REF.	kg/ud
TM41 M6	6	500	100	3,5	0/0427	0,03	2/8225	0,03	-	-
TM41 M8	6	600	240	8,4	0/0455	0,03	0/1070	0,03	0/1072	0,03
TM41 M10	8	700	350	17	0/0336	0,04	0/1071	0,04	0/0970	0,04



TAD



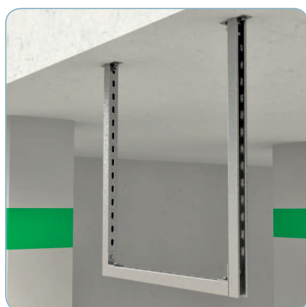
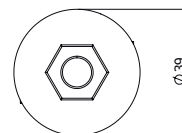
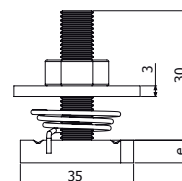
	e mm	Qtrac kg	Qcort kg	Pap N-m	EZ	
					REF.	kg/ud
TAD M8	6	600	240	8,4	0/0494	0,03
TAD M10	8	700	350	17	2/5543	0,03



TEP



	e mm	Qtrac kg	Qcort kg	Pap N-m	EZ	
					REF.	kg/ud
TEP M10X30	8	700	350	17	0/0907	0,10



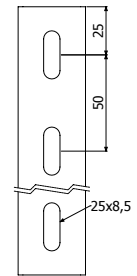
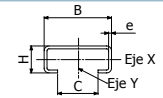


RA / CT

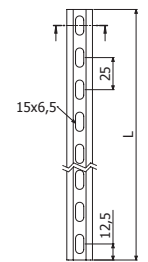
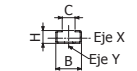


L = 2 -3 m (6,56 -10 ft)

	B mm	H mm	C mm	e mm	A cm ²	Wx cm ³	Wy cm ³	GS		GC	
								REF.	kg/m	REF.	kg/m
RA35	35	14	15	1,5	0,9	0,28	1,00	2/0237	0,79	2/0238	0,87
RA50	50	14	30	1,5	1,1	0,30	1,68	2/0239	0,99	2/0240	1,09
CT40	40	20	20	1,5	1,25	0,65	1,63	2/4471	0,99	2/0246	1,09
CT40	40	20	20	1,5	1,25	0,65	1,63	-	-	-	-
CT20	20	10	10	1,0	0,38	0,09	0,25	2/0242	0,34	-	-



RA / CT



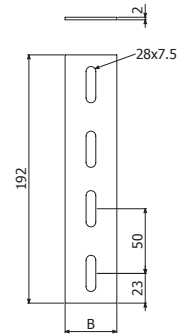
CT20



JURA



	B mm	GS		GC	
		REF.	kg/ud	REF.	kg/ud
JURA 35	28	2/1122	0,07	2/1123	0,08
JURA 50	40	2/1124	0,11	2/3473	0,12

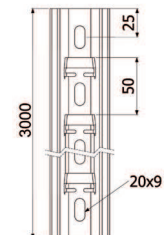
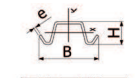


C-SVO



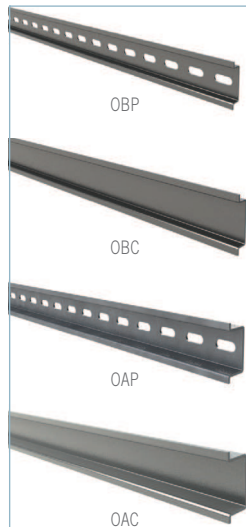
L = 3 m (10 ft)

C-SVO	B mm	H mm	e mm	GS		GC	
				REF.	kg/m	REF.	kg/m
C-SVO	52	20	2	2/1101	1,20	2/7436	1,32





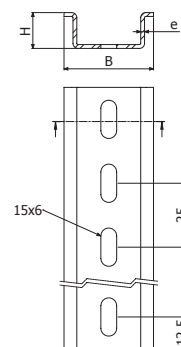
OBP / OBC / OAP / OAC



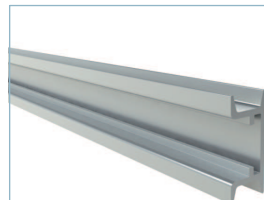
	e mm	B	H	GS	
				REF.	kg/m
OBP	1	35	7	2/0248	0,37
OBC	1	35	7	2/7214	0,41
OAP	1,5	35	14	2/0250	0,69
OAC	1,5	35	14	2/7227	0,73



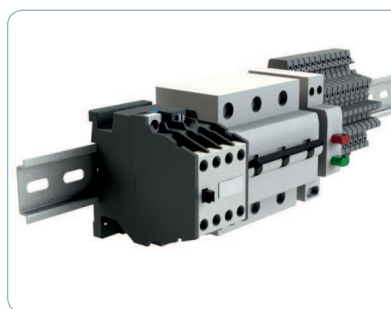
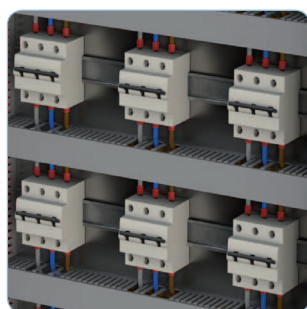
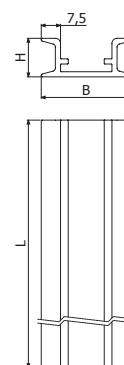
L = 2 m (6,7 ft)



OR



	B		H		L		AL	
	mm	inch	mm	inch	m	ft	REF.	kg/m
OR 2M	35	1 3/8	15	3/5	2	6,6	2/9805	0,40
OR 3M	35	1 3/8	15	3/5	3	10	2/9806	0,40

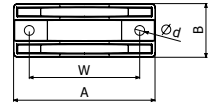
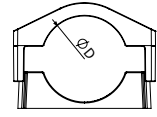




SE



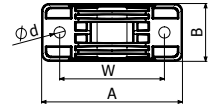
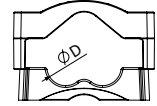
	A	B	W	D	d	RM		PAFV
	mm	mm	mm	mm	mm	kN		REF.
SE 15-26	77	45	50	15-26	10	20,0	✓	2/7282
SE 26-38	92	60	60	26-38	12	30,0	X	2/7283
SE 36-52	105	60	75	36-52	12	20,0	X	2/7284
SE 50-75	126	60	95	50-75	12	10,0	X	2/7285
SE 75-100	200	80	150	75-100	15	68,8	X	2/7286
SE 100-135	225	85	175	100-135	15	67,4	X	2/7287
SE 135-170	260	90	210	135-170	15	66,3	X	2/7288



TRIPLE



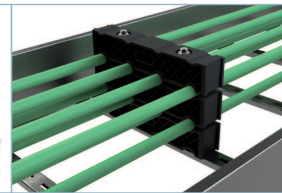
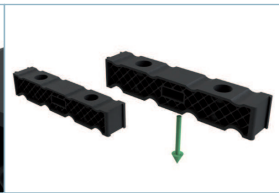
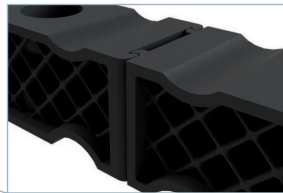
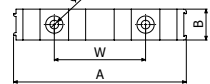
	A	B	W	D	d	RM		PAFV
	mm	mm	mm	mm	mm	kN		REF.
TRIPLE 27-38	180	75	125	3X 27-38	15	35,9	✓	2/7289
TRIPLE 38-51	195	80	145	3X 38-51	15	39,8	✓	2/7290
TRIPLE 51-69	220	85	170	3X 51-69	15	69,9	✓	2/7291
TRIPLE 69-90	252	90	215	3X 69-90	15	56,7	✓	2/7292
TRIPLE 90-118	321	100	270	3X 90-118	15	54,3	✓	2/7293
TRIPLE 118-150	400	110	340	3X 118-150	15	54,3	✓	2/7294



IM




	A	B	H	W	D	d	RM		PAFV
	mm	mm	mm	mm	mm	mm	kN		REF.
IM 3X12-32	180	50	50	148	12-32	14	29,5	✓	2/7295
IM 4X32-48	345	50	50	170	32-48	15	29,5	✓	2/7296






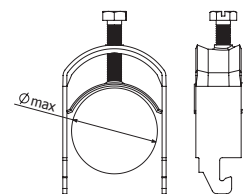
DIN 976 & DIN 934

 <p>DIN976</p> <p>DIN934</p>		i304	
		REF.	kg/ud
	DIN976 M8X85	2/10246	0,03
	DIN976 M10X100	2/10247	0,05
	DIN976 M10X150	2/10248	0,07
	DIN976 M12X150	2/10249	0,13
	DIN976 M12X200	2/10250	0,17
	DIN976 M12X250	2/10251	0,21
	DIN976 M12X360	2/10252	0,30
	DIN934 M8	0/0344	0,01
	DIN934 M10	0/0343	0,01
	DIN934 M12	0/0347	0,01

	VR min	VR max
SE 15-26	M8x85	M8x85
SE 26-38	M10x100	M10x100
SE 36-52	M10x100	M10x100
SE 50-75	M10x100	M10x150
SE 75-100	M12x150	M12x150
SE 100-135	M12x150	M12x200
SE 135-170	M12x200	M12x250
TRIPLE 27-38	M12x150	M12x150
TRIPLE 38-51	M12x150	M12x200
TRIPLE 51-69	M12x150	M12x200
TRIPLE 69-90	M12x200	M12x250
TRIPLE 90-118	M12x250	M12x360
TRIPLE 118-150	M12x250	M12x360
IM 3X12-32	M12x150	M12x150
IM 4X32-48	M12x200	M12x200

SE41

		Ø max	e	GC	
		mm	mm	REF.	kg/ud
	SE41 6-12	6-12	1,5	2/7352	0,03
	SE41 12-16	12-16	1,5	2/7353	0,03
	SE41 16-20	16-20	1,5	2/7354	0,04
	SE41 20-24	20-24	1,5	2/7355	0,04
	SE41 24-28	24-28	1,5	2/7356	0,05
	SE41 28-32	28-32	1,5	2/7357	0,06
	SE41 32-36	32-36	1,5	2/7358	0,07
	SE41 36-40	36-40	1,5	2/7359	0,08
	SE41 40-44	40-44	1,5	2/7360	0,11
	SE41 44-48	44-48	1,5	2/7361	0,12
	SE41 48-52	48-52	1,5	2/7362	0,14
	SE41 52-56	52-56	1,5	2/7363	0,16
	SE41 56-60	56-60	1,5	2/7364	0,18
	SE41 60-64	60-64	1,5	2/7365	0,20
	SE41 64-70	64-70	1,5	2/7366	0,22
	SE41 70-76	70-76	1,5	2/7367	0,24
SE41 76-82	76-82	1,5	2/7368	0,25	
SE41 82-88	82-88	1,5	2/7369	0,26	
SE41 88-94	88-94	1,5	2/7370	0,28	
SE41 94-100	94-100	1,5	2/7371	0,30	





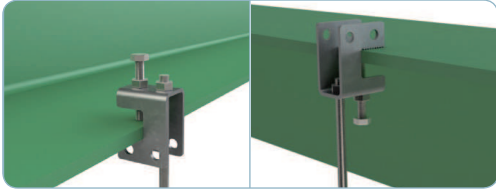
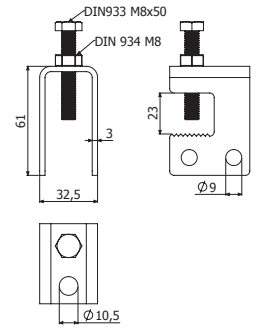
GV2



GV2

M8 & M10

		GS	
REF.	kg/ud	REF.	kg/ud
2/15501	0,15		



95 Kg

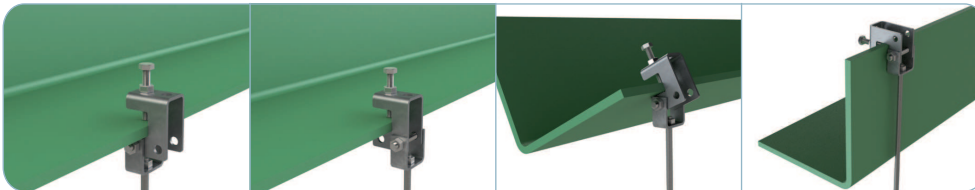
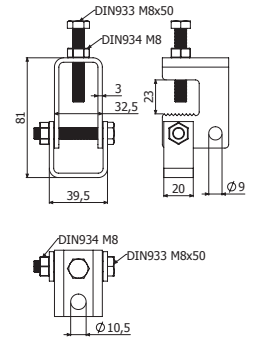
GVV2



GVV2

M8 & M10

		GS	
REF.	kg/ud	REF.	kg/ud
2/7073	0,30		



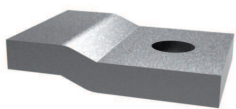
200 Kg

95 Kg

80 Kg

200 Kg

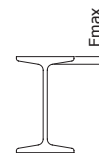
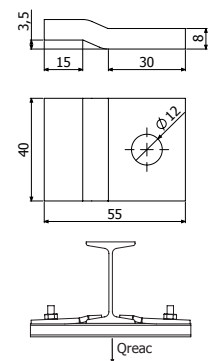
BRP



BRP

M10

		Emax	Qreac	GC	
		mm	kg	REF.	kg/ud
		5	1000	2/5624	0,17

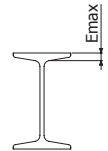
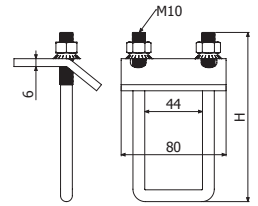




BCA



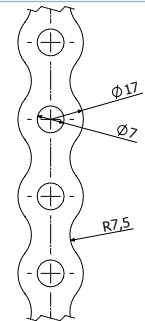
	E _{max} mm	Pap Nm	H mm	GC	
				REF.	kg/ud
BCA 41X41	20	17,5	90	2/8809	0,39
BCA 41X82	20	17,5	130	2/8810	0,42



CSJ



	AL		GS		i430	
	REF.	kg/m	REF.	kg/ud	REF.	kg/m
CSJ	2/3461	0,04	2/4291	0,11	2/3462	0,10



BVL

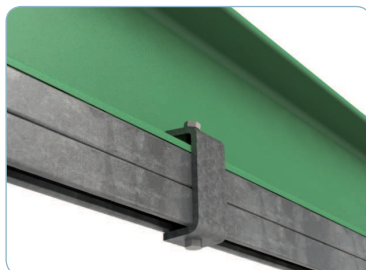
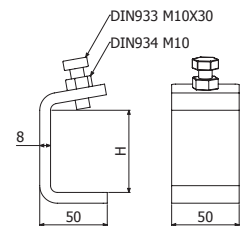


BVL41

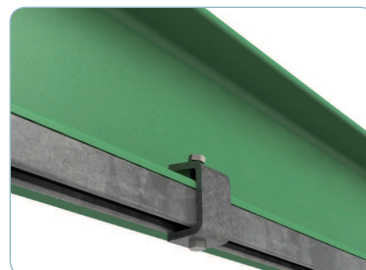


BVL82

	H mm	GC	
		REF.	kg/ud
BVL41	60	2/11230	0,50
BVL82	100	2/11231	0,63



BVL41 + 41X41



BVL82 + 41X82



DIN976 & MVR

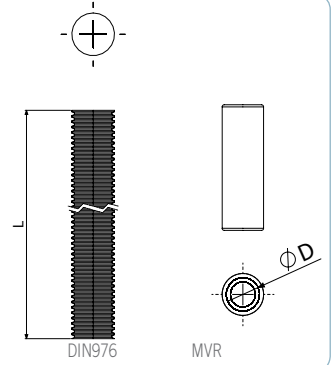


DIN976



MVR

	Qtrac kg	EZ	
		REF.	kg/ud
DIN976 M6X1000	400	0/0678	0,32
DIN976 M8X1000	800	2/3397	0,35
DIN976 M10X1000	1400	2/5535	0,59
DIN976 M12X1000	2500	2/6502	0,87
MVR M6	-	2/6323	0,03
MVR M8	-	2/4462	0,04

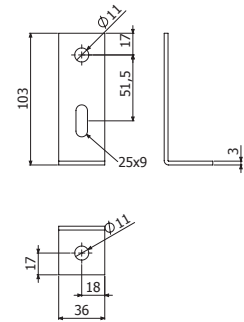


SBL

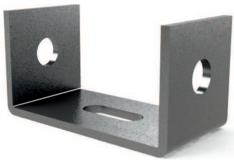


SBL	GS		GC	
	REF.	kg/ud	REF.	kg/ud
	2/0351	0,11	2/0361	0,12

M8 & M10

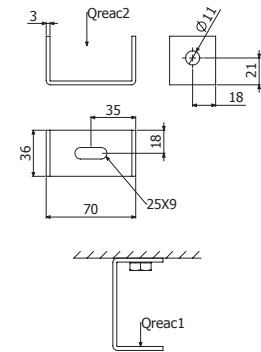


SBC



SBC	Qreac 1	Qreac 2	GS		GC	
	kg	kg	REF.	kg/ud	REF.	kg/ud
	40	40	2/0352	0,11	2/0362	0,12

M8 & M10

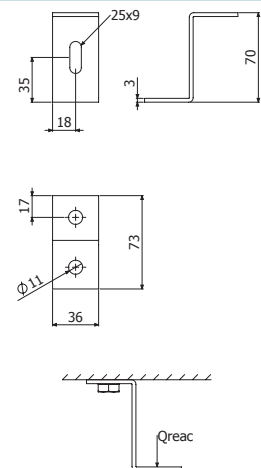


SBZ



SBZ	Qreac	GS		GC	
	kg	REF.	kg/ud	REF.	kg/ud
	35	2/0354	0,11	2/0364	0,12

M8 & M10





DIN933 / DIN912 / ISO7380

	UVM ud	UVE ud	P Nm	M mm	L mm	H mm	EZ		i304		
							REF.	kg/ud	REF.	kg/ud	
							DIN933 M10X30	100	100	35	
DIN933 M10X20	100	100	35	10	20	6,6	0/0665	0,03	0/0933	0,03	
DIN933 M8X55	100	100	15	8	55	5,4	0/0736	0,03	-	-	
DIN933 M8X25	100	100	15	8	25	5,4	0/0310	0,03	-	-	
DIN933 M8X20	100	100	15	8	20	5,4	-	-	0/0318	0,03	
DIN933 M6X25	100	100	8	6	25	4,1	2/5545	0,02	0/0330	0,02	
DIN933 M6X20	100	100	8	6	20	4,1	0/0727	0,02	-	-	
DIN912 M10X30	100	100	35	10	30	10	-	-	0/0984	0,03	
DIN912 M8X70	100	100	15	8	70	8	0/0930	0,05	0/0939	0,05	
DIN912 M8X55	100	100	15	8	55	8	0/0940	0,04	0/0941	0,04	
ISO7380 M8X30	100	100	15	8	30	4,4	-	-	0/1117	0,03	
ISO7380 M6X25	100	100	8	6	25	3,3	0/1064	0,02	-	-	

DIN6923

	d	Dext mm	A mm	H mm	EZ		i304		
					REF.	kg/ud	REF.	kg/ud	
					DIN6923 M6	M6	14	10	
DIN6923 M8	M8	18	13	8	0/0338	0,01	0/0348	0,01	

DIN934

	d	A mm	H mm	EZ		i304		
				REF.	kg/ud	REF.	kg/ud	
				DIN934 M6	M6	10	4,8	
DIN934 M8	M8	13	6,2	0/0339	0,01	0/0344	0,01	
DIN934 M10	M10	17	7,7	0/0340	0,01	0/0343	0,01	
DIN934 M12	M12	19	9,7	-	-	0/0347	0,01	

DIN125

	Dint mm	Dext mm	e mm	EZ		i304		
				REF.	kg/ud	REF.	kg/ud	
				DIN125 M6	6,4	12	1,6	
DIN125 M8	8,4	16	1,6	0/0292	0,01	0/0299	0,01	
DIN125 M10	10,5	20	2	0/0649	0,01	0/0294	0,01	
DIN125 M12	13	24	2,5	-	-	0/0565	0,01	

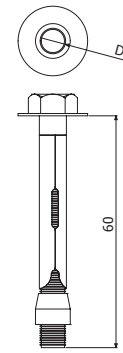
DIN9021

	Dint mm	Dext mm	e mm	EZ		i304		
				REF.	kg/ud	REF.	kg/ud	
				DIN9021 M6	6,4	18	1,6	
DIN9021 M8	8,4	25	2	2/7021	0,01	0/0298	0,01	

**CCM**

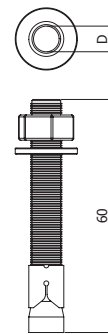
	M mm	L mm	Qtrac kg	EZ	
				REF.	kg/ud
CCM M6X60	6	60	180	2/6419	0,03
CCM M8X60	8	60	225	2/6420	0,04

↓ 65mm, Ø 8mm (CCM 6X60) / Ø10mm (CCM 8x60)

**SCM**

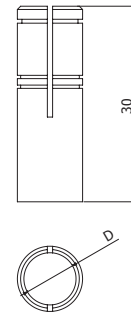
	D mm	L mm	Qtrac kg	EZ	
				REF.	kg/ud
SCM M10X75	10	75	340	2/4672	0,05
SCM M12X80	12	80	780	2/6258	0,08

↓ 62mm (SCM 10x75) - ↓ 72mm (SCM 12x80), Ø 10mm (SCM 10X75) / Ø12mm → (SCM 12x80)

**CM**

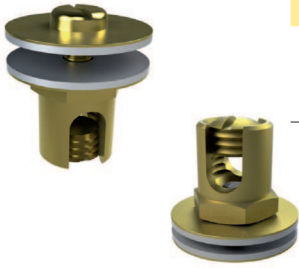
	D mm	M	Qtrac kg	EZ	
				REF.	kg/ud
CM M6X30	8	6	280	2/6468	0,01
CM M8X30	10	8	370	2/6469	0,01

↓ 32mm - Ø 8mm (CM 6x30) / ↓ 33mm - Ø 10mm (CM8x30)





TT / TTL

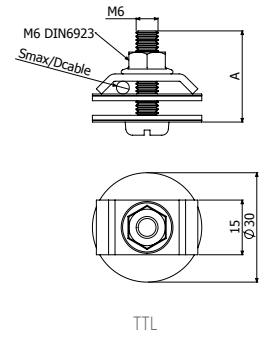
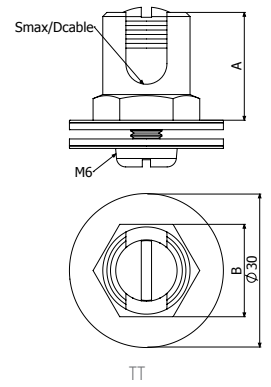
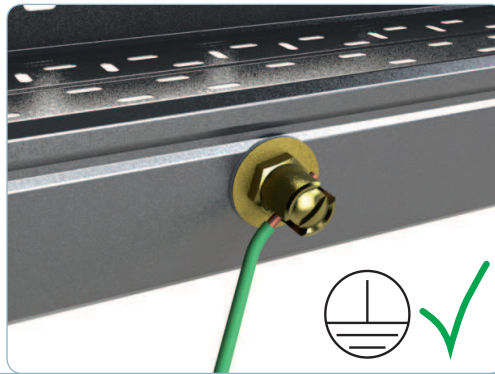


TT



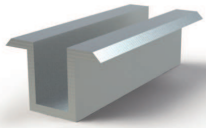
TTL

	Smin mm ²	Smax mm ²	Dcable mm	A mm	B mm	LTN	
						REF.	kg/ud
TT 10-35	-	35	4 a 8	22	18	2/6796	0,04
TT 35-95	-	95	8 a 13	30	24	2/6797	0,07
TTL 10-35	10	35	4 a 8	25	-	2/8189	0,03

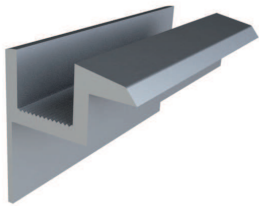




FPS



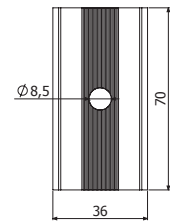
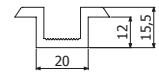
FPSC



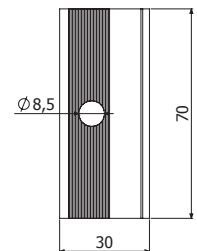
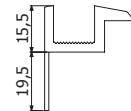
FPSL

FPSC
FPSL

AL	
REF.	kg/ud
2/6794	0,06
2/6795	0,03



FPSC



FPSL