



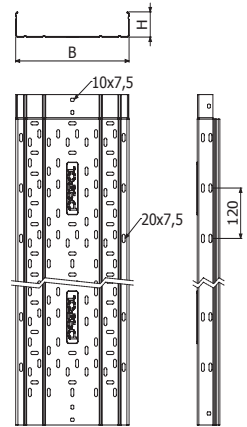
MRE H60



L = 3 m (10 ft)

	B		H		e	GS		GC		i304	i316
	mm	inch	mm	inch		REF.	kg/m	REF.	kg/m		
	MRE 100X60	100	4"	60		2 3/8"	1	2/7273	1,79		
MRE 150X60	150	6"	60	2 3/8"	1	2/7274	2,18	2/7518	2,22		
MRE 200X60	200	8"	60	2 3/8"	1	2/7275	2,57	2/7519	2,62		
MRE 300X60	300	12"	60	2 3/8"	1	2/7276	3,35	2/7520	3,42		
MRE 400X60	400	16"	60	2 3/8"	1	2/7277	4,14	2/7521	4,22		
MRE 500X60	500	20"	60	2 3/8"	1	2/7278	4,93	2/7522	5,02		
MRE 600X60	600	24"	60	2 3/8"	1	2/7279	5,70	2/7523	5,82		

4/100 x B1 (2/4356 - EZ // 2/6826 - GC // 2/4925 - i304).



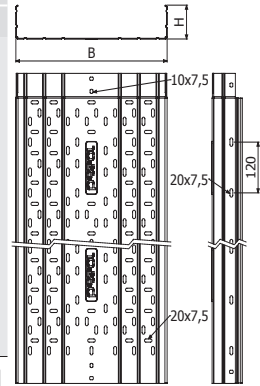
MRE H80



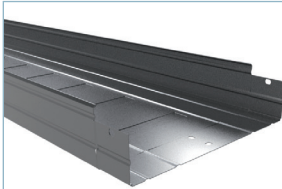
L = 3 m (10 ft)

	B		H		e	GS		GC		i304		i316	
	mm	inch	mm	inch		REF.	kg/m	REF.	kg/m	REF.	kg/m	REF.	kg/m
	MRE 100X80X0,7	100	4"	80		3 1/7"	0,7	2/17809	1,48	2/18594	1,74	2/17830	1,48
MRE 100X80	100	4"	80	3 1/7"	1	2/8760	2,14	2/18595	2,04	2/18600	1,78	2/18601	1,78
MRE 150X80X0,7	150	6"	80	3 1/7"	0,7	2/17810	1,71	2/18596	2,01	2/17831	1,71	2/18141	1,71
MRE 150X80	150	6"	80	3 1/7"	1	2/8761	2,54	2/18597	2,48	2/17596	2,17	2/18602	2,17
MRE 200X80X0,8	200	8"	80	3 1/7"	0,8	2/17811	2,27	2/18598	2,64	2/17832	2,27	2/18142	2,27
MRE 200X80	200	8"	80	3 1/7"	1	2/8762	2,94	2/18599	2,93	2/17597	2,57	2/18603	2,57
MRE 300X80	300	12"	80	3 1/7"	1	2/8763	3,74	2/10033	4,11	2/17833	3,51	2/18143	3,51
MRE 400X80	400	16"	80	3 1/7"	1	2/8764	4,54	2/10034	4,99	2/17834	4,32	2/18144	4,32
MRE 500X80	500	20"	80	3 1/7"	1	2/8765	5,34	2/10035	5,87	2/17835	5,04	2/18145	5,04
MRE 600X80	600	24"	80	3 1/7"	1	2/8766	6,14	2/10036	6,85	2/17836	5,75	2/18146	5,75

4/100 x B1 (2/4356 - EZ // 2/6826 - GC // 2/4925 - i304 // 2/18388 - i316)



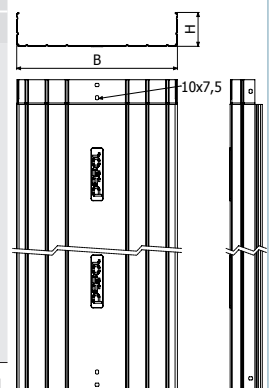
MRE-C H80



L = 3 m (10 ft)

	B		H		e	GS		GC		i304		i316	
	mm	inch	mm	inch		REF.	kg/m	REF.	kg/m	REF.	kg/m	REF.	kg/m
	MRE-C 100X80X0,7	100	4"	80		3 1/7"	0,7	2/17812	1,51	2/18605	1,77	2/17837	1,51
MRE-C 100X80	100	4"	80	3 1/7"	1	2/8770	1,78	2/18606	2,09	2/18611	1,78	2/18614	1,78
MRE-C 150X80X0,7	150	6"	80	3 1/7"	0,7	2/17813	2,27	2/18607	2,64	2/17838	2,36	2/18148	2,36
MRE-C 150X80	150	6"	80	3 1/7"	1	2/8771	1,78	2/18608	2,03	2/18612	1,78	2/18615	1,78
MRE-C 200X80X0,8	200	8"	80	3 1/7"	0,8	2/17814	2,17	2/18609	2,48	2/17839	2,17	2/18149	2,17
MRE-C 200X80	200	8"	80	3 1/7"	1	2/8772	2,57	2/18610	2,98	2/18613	2,57	2/18616	2,57
MRE-C 300X80	300	12"	80	3 1/7"	1	2/8773	3,79	2/10037	4,33	2/17840	3,79	2/18150	3,79
MRE-C 400X80	400	16"	80	3 1/7"	1	2/8774	4,61	2/10038	5,25	2/17841	4,61	2/18151	4,61
MRE-C 500X80	500	20"	80	3 1/7"	1	2/8775	5,41	2/10039	6,16	2/17842	5,41	2/18152	5,41
MRE-C 600X80	600	24"	80	3 1/7"	1	2/8776	6,19	2/10040	7,06	2/17843	6,19	2/18153	6,19

4/100 x B1 (2/4356 - EZ // 2/6826 - GC // 2/4925 - i304 // 2/18388 - i316)



MRE H100



L = 3 m (10 ft)

	B		H		e	GS		GC		i304	i316
	mm	inch	mm	inch		REF.	kg/m	REF.	kg/m		
	MRE 100X100	100	4"	100		4"	1	2/7408	2,37		
MRE 150X100	150	6"	100	4"	1	2/7409	2,80	2/7524	2,86		
MRE 200X100	200	8"	100	4"	1	2/7410	3,20	2/7525	3,26		
MRE 300X100	300	12"	100	4"	1	2/7411	3,98	2/7526	4,06		
MRE 400X100	400	16"	100	4"	1	2/7412	4,77	2/7527	4,86		
MRE 500X100	500	20"	100	4"	1	2/7413	5,55	2/7528	5,66		
MRE 600X100	600	24"	100	4"	1	2/7414	6,34	2/7529	6,46		

4/100 x B1 (2/4356 - EZ // 2/6826 - GC // 2/4925 - i304).

