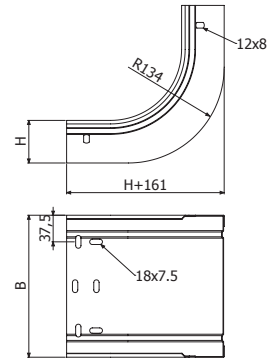




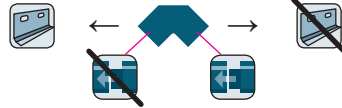
CCERC



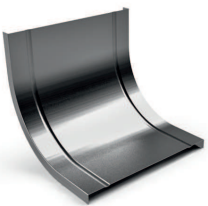
	B		H		GS		GC		i304	
	mm	inch	mm	inch	REF.	kg/ud	REF.	kg/ud	REF.	kg/ud
CCERC 100x35	100	4"	35	1 3/8"	2/1451	0,34	2/1482	0,39	-	-
CCERC 150x35	150	6"	35	1 3/8"	2/1452	0,45	2/1483	0,51	-	-
CCERC 200x35	200	8"	35	1 3/8"	2/1453	0,55	2/1484	0,63	-	-
CCERC 300x35	300	12"	35	1 3/8"	2/1454	0,76	2/1485	0,87	-	-
CCERC 100x60	100	4"	60	2 1/3"	2/1458	0,50	2/1489	0,57	2/4908	0,50
CCERC 150x60	150	6"	60	2 1/3"	2/1459	0,62	2/1490	0,71	2/5157	0,63
CCERC 200x60	200	8"	60	2 1/3"	2/1460	0,74	2/1491	0,84	2/5024	0,75
CCERC 300x60	300	12"	60	2 1/3"	2/1462	0,98	2/1493	1,12	2/6503	0,99
CCERC 400x60	400	16"	60	2 1/3"	2/1463	1,22	2/1494	1,39	2/7392	1,22
CCERC 500x60	500	20"	60	2 1/3"	2/1464	1,46	2/1495	1,67	-	-
CCERC 600x60	600	24"	60	2 1/3"	2/1465	1,71	2/1496	1,94	2/7393	1,71
CCERC 100x80	100	4"	80	3 1/7"	2/1466	0,66	2/1497	0,75	-	-
CCERC 150x80	150	6"	80	3 1/7"	2/1467	0,79	2/1498	0,90	-	-
CCERC 200x80	200	8"	80	3 1/7"	2/1468	0,92	2/1499	1,05	-	-
CCERC 300x80	300	12"	80	3 1/7"	2/1470	1,19	2/1501	1,36	-	-
CCERC 400x80	400	16"	80	3 1/7"	2/1471	1,46	2/1502	1,66	-	-
CCERC 500x80	500	20"	80	3 1/7"	2/1472	1,72	2/1503	1,96	-	-
CCERC 600x80	600	24"	80	3 1/7"	2/1473	1,99	2/1504	2,27	-	-
CCERC 100x100	100	4"	100	4"	2/1474	0,78	2/1505	0,89	-	-
CCERC 150x100	150	6"	100	4"	2/1475	0,93	2/1506	1,06	-	-
CCERC 200x100	200	8"	100	4"	2/1476	1,07	2/1507	1,22	-	-
CCERC 300x100	300	12"	100	4"	2/1478	1,36	2/1509	1,55	-	-
CCERC 400x100	400	16"	100	4"	2/1479	1,65	2/1510	1,89	-	-
CCERC 500x100	500	20"	100	4"	2/1480	1,95	2/1511	2,22	-	-
CCERC 600x100	600	24"	100	4"	2/1481	2,24	2/1512	2,55	-	-



2 JUER + 4/100 x B1 (2/4356 - GS / 2/6826 - GC)



TCCERC



	B		GS		GC		i304	
	mm	inch	REF.	kg/ud	REF.	kg/ud	REF.	kg/m
TCCERC 100	100	4"	2/1544	0,23	2/1551	0,27	2/3263	0,23
TCCERC 150	150	6"	2/1545	0,32	2/1552	0,37	2/3264	0,28
TCCERC 200	200	8"	2/1546	0,41	2/1553	0,47	2/3265	0,41
TCCERC 300	300	12"	2/1547	0,58	2/1554	0,67	2/3266	0,58
TCCERC 400	400	16"	2/1548	0,75	2/1555	0,88	2/3271	0,75
TCCERC 500	500	20"	2/1549	0,93	2/1556	1,08	-	0,93
TCCERC 600	600	24"	2/1550	1,10	2/1557	1,28	2/4724	1,10

